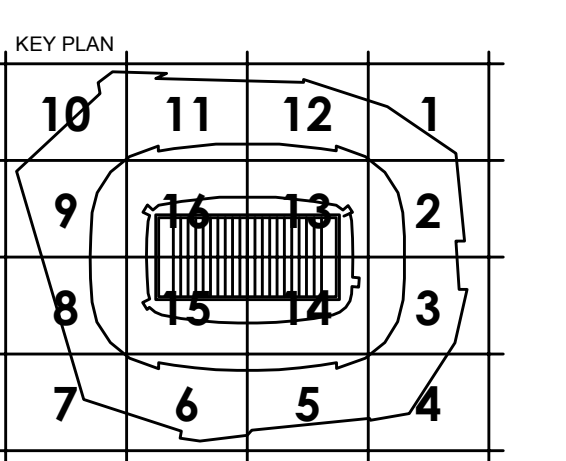


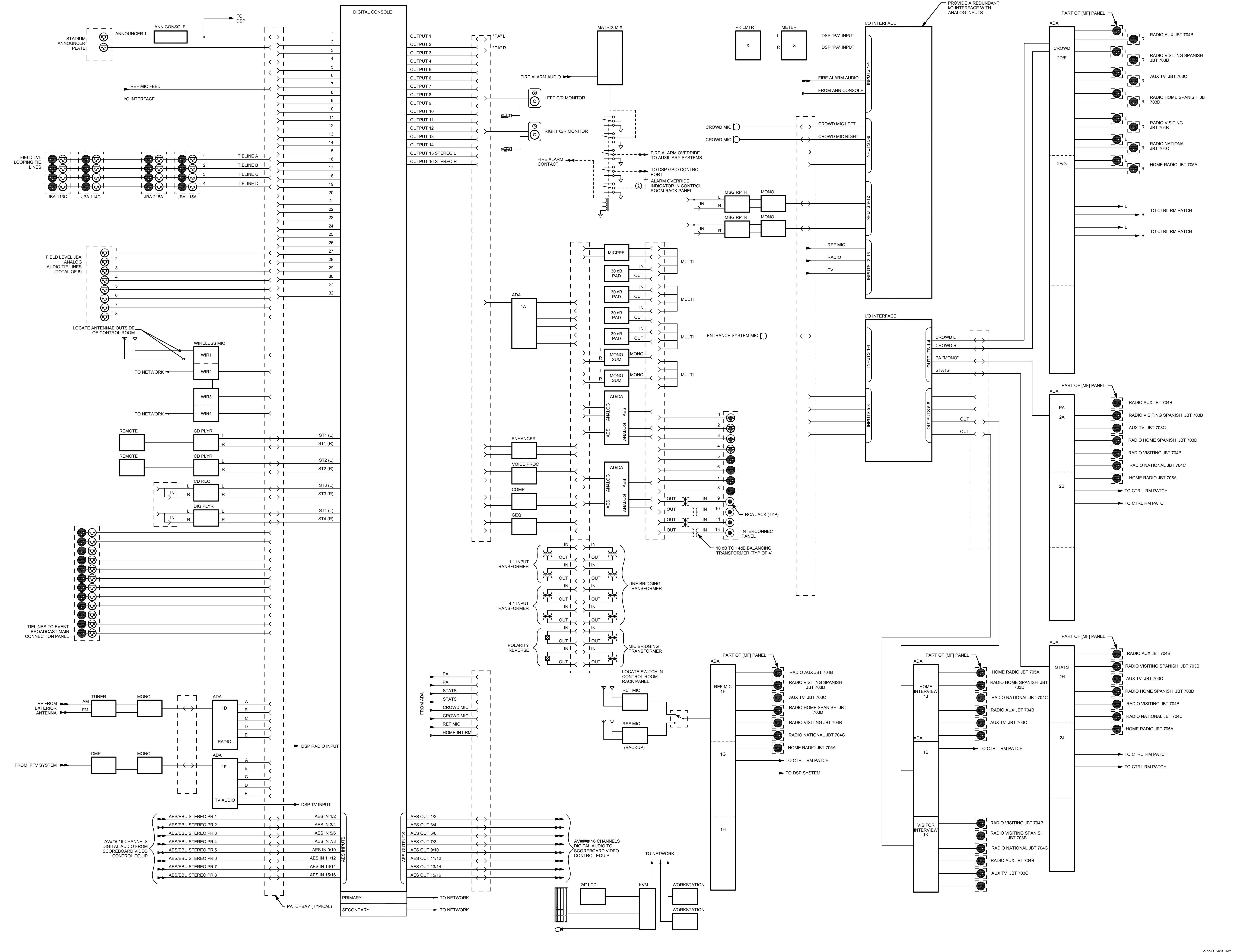
- OWNER**
MINNESOTA SPORTS FACILITIES AUTHORITY
900 SOUTH 6TH STREET, MINNEAPOLIS, MN 55415
- OWNER**
MINNESOTA VIKINGS FOOTBALL LLC
9500 VIKING DR., EDEN PRAIRIE, MN 55434
- ARCHITECT / INTERIORS / BRANDING**
HKS, INC.
1919 MORRIS AVENUE, DALLAS, TX 75201
- ASSOCIATE ARCHITECT - SKIN**
STUDIO FIVE ARCHITECTS
322 FIRST AVE. N., SUITE 600, MINNEAPOLIS, MN 55401
- MEP / TECHNOLOGY**
M E ENGINEERS, INC.
10055 WEST 43RD AVE., WHEAT RIDGE, CO 80033
- STRUCTURAL ENGINEER**
THORNTON TOMASETTI
12750 MERIT DR., SUITE 200, ST. PAUL, MN 55124
- CIVIL ENGINEER**
EVS, INC.
10260 VALLEY VIEW, SUITE 123, EDEN PRAIRIE, MN 55434
- LANDSCAPE ARCHITECT**
OSLUND AND ASSOCIATES
113 WASHINGTON SQUARE, N., MINNEAPOLIS, MN 55401
- AUDIO VISUAL CONSULTANTS**
ACUSTIC DIMENSIONS
15508 WRIGHT BROTHERS DR., ADDISON, TX 75001
- WJHW**
4801 SPRING VALLEY RD., DALLAS, TX 75244
- CODE / FIRE PROTECTION**
FSC, INC.
9225 INDIAN CREEK, SUITE 300, OVERLAND PARK, KS 66210
- FOOD SERVICE**
RICCA NEWMARK
5325 SOUTH VALENTIA, GREENWOOD VLG, CO 80111
- LIGHTING CONSULTANT**
PH/CC
1425 DUTCH VALLEY PL., C & D, ATLANTA, GA 30324
- WAYFINDING**
SELBERT PERKINS DESIGN
432 CALVERT BLDG., PLAYA DEL REY, CA 90293
- VERTICAL TRANSPORTATION**
ELEVATOR ADVISORY GROUP
1450 PENNSYLVANIA AVE., SAINT PAUL, MN 55124
- ADA CONSULTANT**
ED ROETTER CONSULTING, LLC
29590 MISSION BELLEVUE, LOUISBURG, KS 66053
- WIND / SNOW CONSULTANT**
ROWAN, WILLIAMS, DAVIES, AND IRWIN, INC.
650 WOODLAWN RD. W., GUELPH, ON CANADA N1K 1B8
- BUILDING ENVELOPE CONSULTANT**
LEIGH BATES, INC.
330 N. WABASH AVE., SUITE 1500, CHICAGO, IL 60611
- FAÇADE ACCESS CONSULTANT**
8089 LINCOLN ST., SUITE 105, LITTLETON, CO 80122



REVISION

HKS PROJECT NUMBER
16246.000
DATE
MAY 2, 2014
ISSUE
CCD-060

SHEET TITLE
AUDIO CONTROL ROOM FUNCTIONAL DIAGRAM
SHEET NO.



PLT DATE

TEMP DATE VERSION