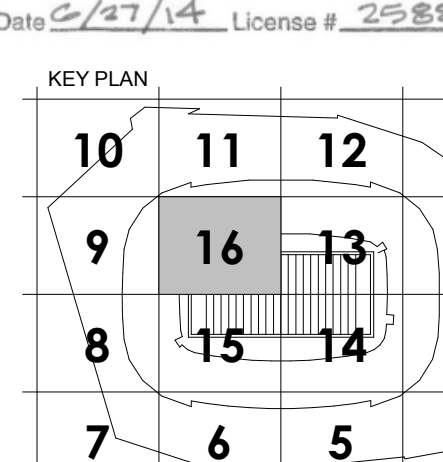


- 13 REFER TO ARCHITECTURAL ELEVATIONS FOR TV POWER LOCATION
- 36 PROVIDE CONNECTION AS REQUIRED TO DETAIL KE6.0006.
- 82 PROVIDE CONNECTION TO LED PLAY CLOCK
- 124 PROVIDE HUBBELL 20A TWIST LOCK MODEL #HBL 2310SW.
- 125 DUPEX MOUNTED IN NFL ELECTRONIC CABINET.
- 150 PROVIDE HARD WIRED J-BOX CONNECTION TO GAME CLOCK MOUNTED AT 8' REF. COORDINATE EXACT LOCATION WITH AV CONTRACTOR PRIOR TO INSTALL.



PROFESSIONAL ENGINEER
I hereby certify that this plan, specification, or report was prepared by me or under my direct supervision and that I am a duly Licensed Professional Engineer under the laws of the State of Minnesota.

Print Name: SCOTT V. GERARD
Signature: [Signature]
Date: 6/27/14 License #: 25884

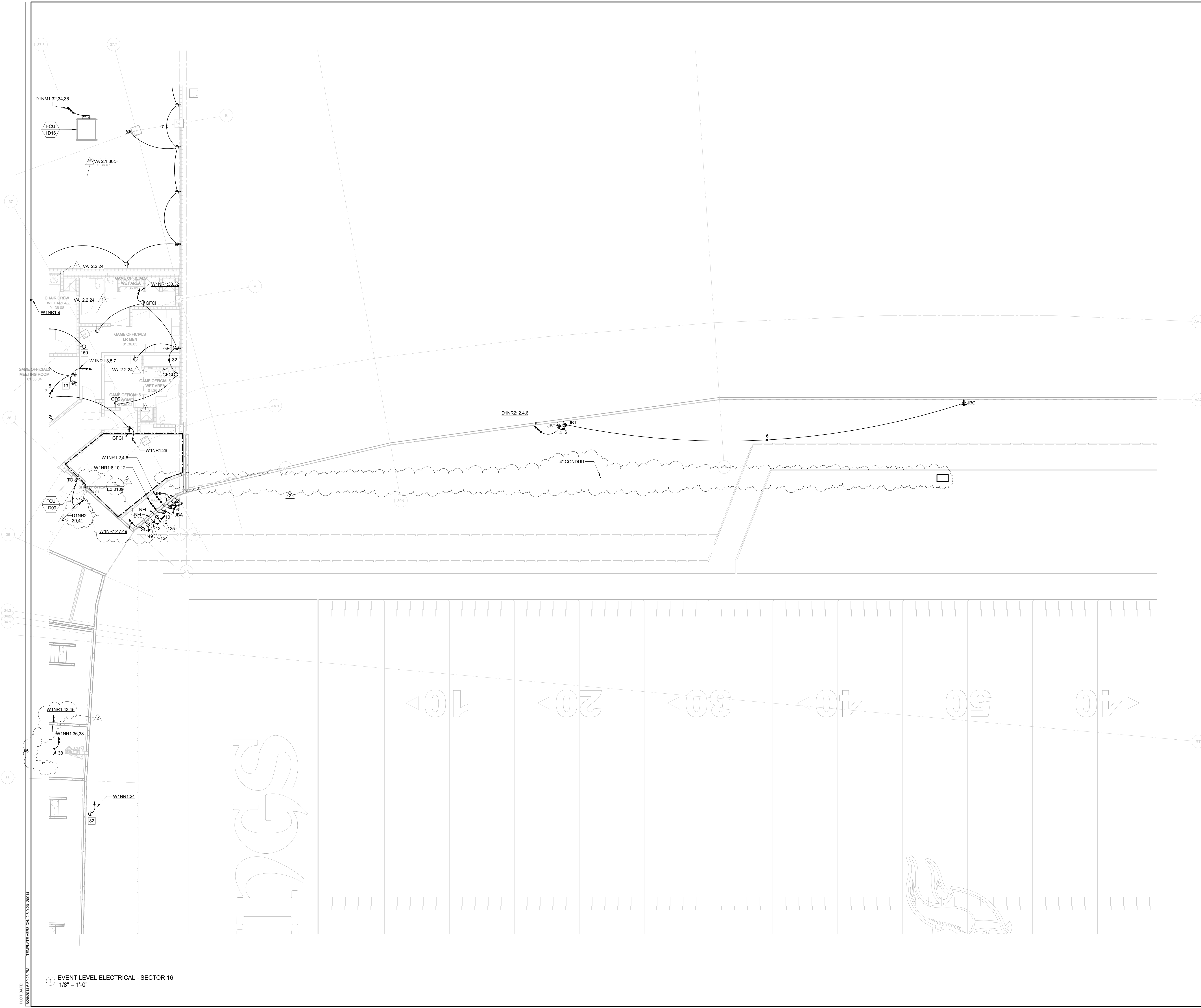


REVISION NO.	DESCRIPTION	DATE
1	CCD-078	06/13/2014
2	CCD-088	06/27/2014

HKS PROJECT NUMBER
16246.000
DATE
MAY 2, 2014
ISSUE
CCD-060

SHEET TITLE
ELECTRICAL LEVEL
ELECTRICAL POWER -
SECTOR 16

SHEET NO.
E2.0116



1 EVENT LEVEL ELECTRICAL - SECTOR 16
1/8" = 1'-0"

PLOT DATE: 06/20/14 4:59:22 PM TEMPLATE VERSION: 210.20120914